



# TECH RIDER

<https://goo.gl/maps/W7v9Z4xX5Q3HVNSb8>

Contact technique : [sam@leportfranc.ch](mailto:sam@leportfranc.ch)

## STAGE:

Profondeur scène 4,5 m

Largeur scène 8,5 m

Hauteur sous structure 3,5 m

## SOUND:

F.O.H

Yamaha QL5 48 tracks

CD Player Tascam CD200SB

Laptop Lenovo ThinkPad Edge E540

## P.A.

6x L-Acoustics Arcs 11 + 2x L'Acoustics 12XTI

4x L-Acoustics S B 1 8i

2x L-Acoustics LA8

1x L-Acoustics LA4X

## Monitoring

2x L-Acoustics LA4X

8x L-Acoustics 1 2XT

## Microphones

2x Shure Beta52A

8x Shure SM58

6x Shure SM57

2x Shure Beta57

2x Shure Beta91A

2x Beyerdynamic M88TG

4x Sennheiser E906

2x Shure BETA 181/C

6x Sennheiser E604

4x Neumann KM184mt

## Microphones HF

2x Sennheiser SK500 G3-B

2x Sennheiser SKM500-935 G3-B

## DI

4x BSS AR133 (active)

4x Radial JDI MKIII (passive)

2x Radial JDI Duplex (passive) - stereo

DPA

2x V04099X-HI

2x DAD6001 -BC

2x BC4099

2x PC4099

2x DAD6034

VIDÉO:

1x Beamer EIKI EK-600U

1x Écran à commande électrique 3x2m

Liaison régie - beamer VGA ou HDMI

LIGHTS:

Console Grand MA2 ultralight

4x Clay Paky alphaspot HPE

4x Robe Robin 300 LED

6x Rampes ACL

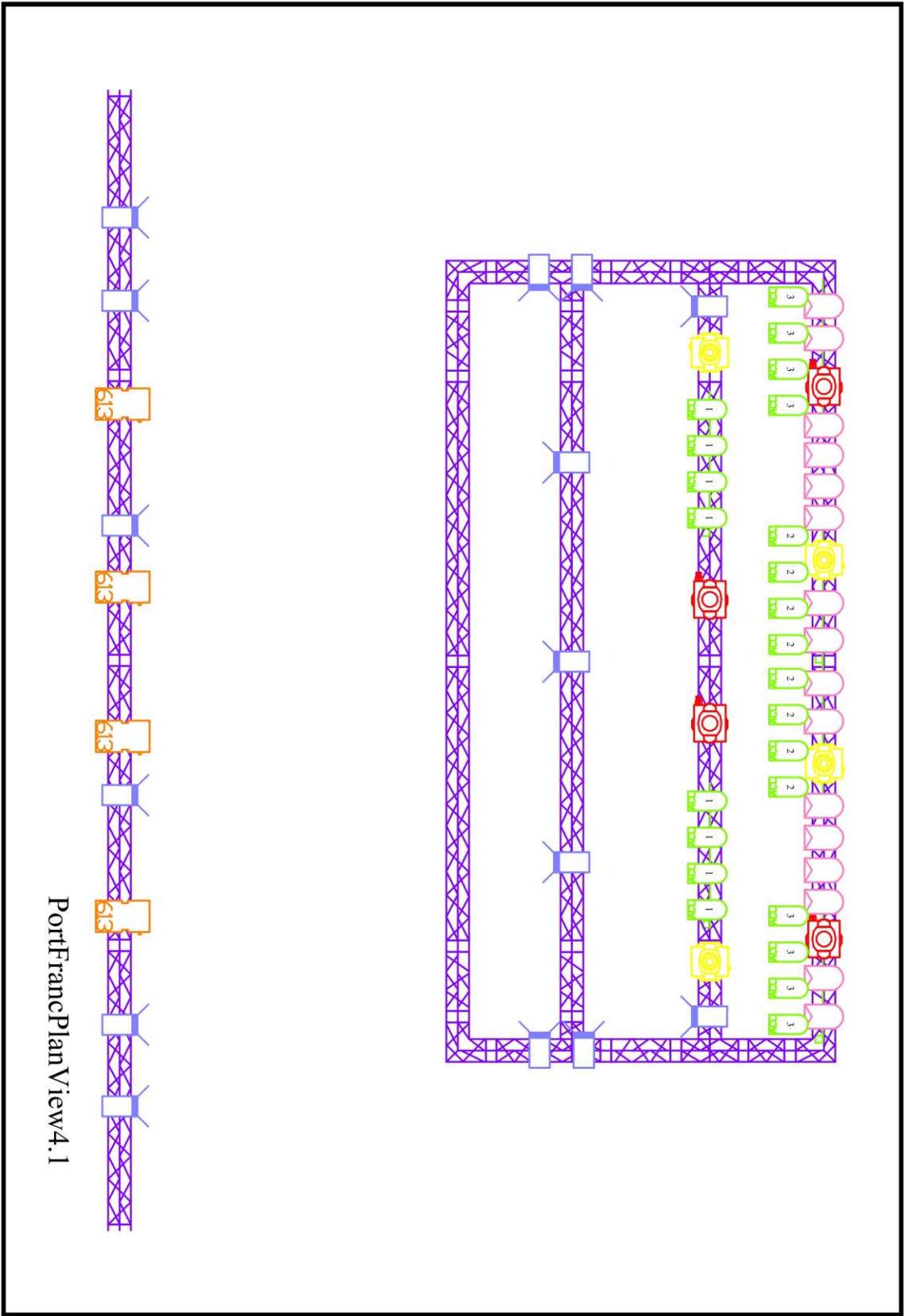
6x Découpes Selecon 1KW

8x PC LDR Aria 1KW

12x PAR64 LDR 1KW

1x Machine à Brouillard Unique Look

1x Boule à facettes 50cm



PortFrancPlan View4.1

BACKLINE:

2x Pioneer CDJ1000

2x Pioneer CDJ2000NXS2

1x Pioneer DJM900NXS

2x Technics MK2

Drum :

GMS SL SERIE

10' 12' 14'

Snare 14' x 6'

Kick 20'

Cymbales :

PAISTE 14' MINI CHINA

STAGG 13' HH

STAGG 16' CRASH

STAGG 20' RIDE

2x Cymbal Stand

Amplificateurs :

FENDER blues de ville

FENDER hot rod delux III

AMPEG PF 500 (sans cabinet)

